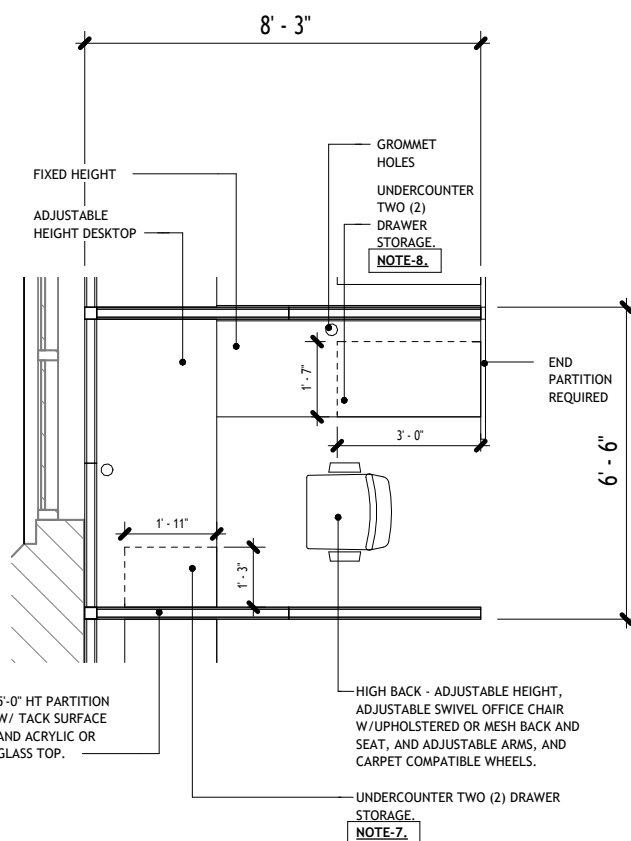


12TH FLOOR ONLY (SYSTEMS FURNITURE PARTITIONS)	
Name	Area

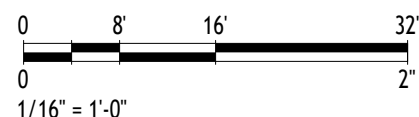
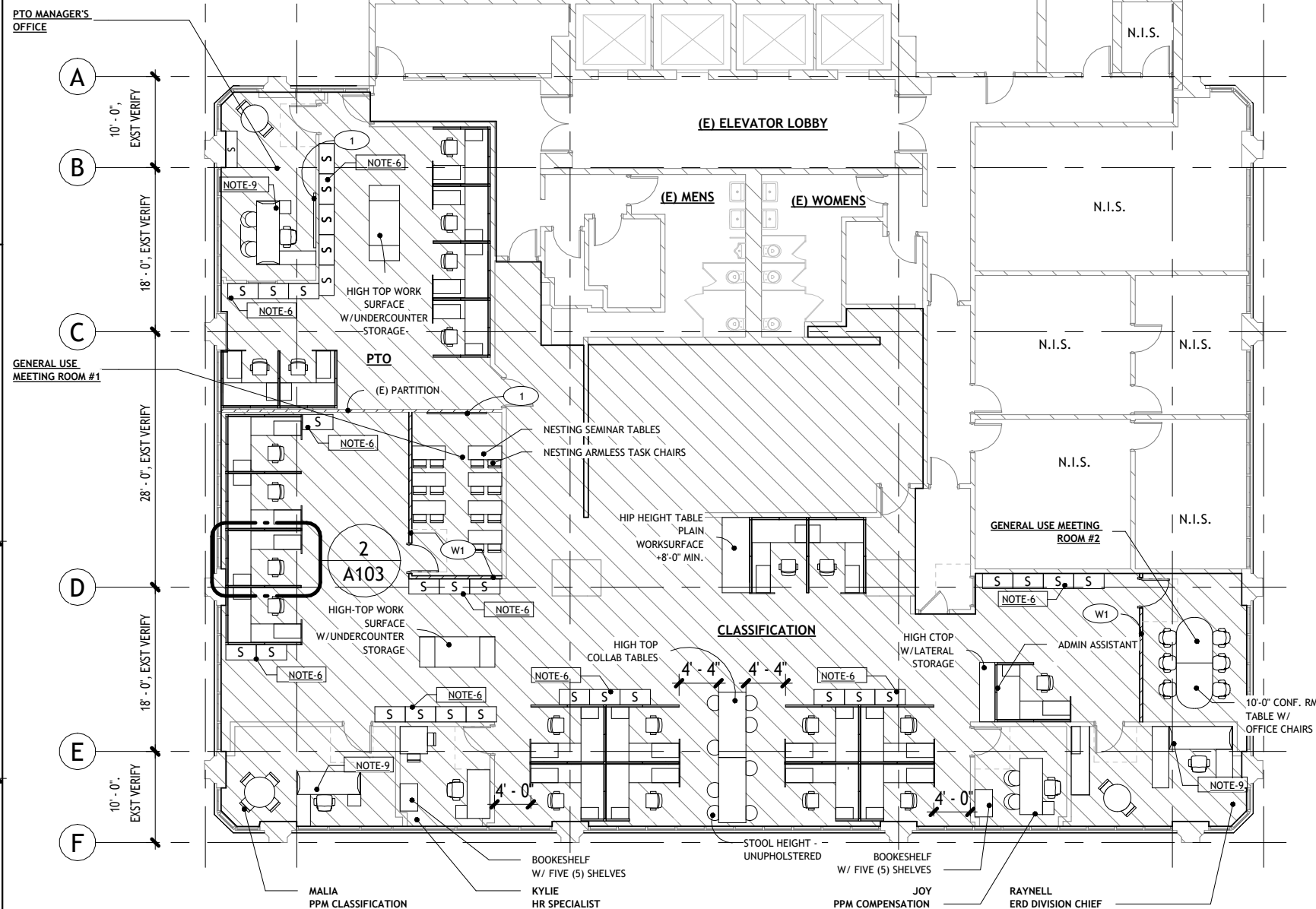
PTO OFFICE	756 SF
GENERAL USE MEETING ROOM #2	190 SF
GENERAL USE MEETING ROOM #1	177 SF



2 TYP WORKSTATION - 12TH & 13TH FLOOR

1/4" = 1'-0"

NOTE:
UNDERCOUNTER ACCESSIBLE PANEL CONCEALED SPACE FOR POWER AND TELECOM CABLE ROUTING.



1 12TH FLOOR
1/16" = 1'-0"

NOTE:

- BIDDERS/CONTRACTORS ARE RESPONSIBLE FOR VERIFYING ALL DIMENSIONS, ADA ACCESSIBLE REQUIREMENTS, DELIVERY CLEARANCES TO ALL INTERIOR SPACES AND SHALL COMPLY WITH ALL BUILDING CODE.
- BIDDERS/CONTRACTORS ARE RESPONSIBLE FOR ALL ELECTRICAL CONNECTIONS, POWER POLES REQUIRED, ADDITIONS TO ELECTRICAL PANELS, CONDUIT, WIRING, PER CURRENT ELECTRICAL CODE. LICENSED ELECTRICAL CONSULTANTS/ELECTRICIAN RECOMMENDED FOR ALL POWERED WORK STATIONS.

FURNITURE PLAN KEY NOTES:

- 1 4' X 8' WHITEBOARD
- 2 (E) PRINTING STATION (TO REMAIN)
- W1 PARTITION - 18" FROM CEILING W/ ADA COMPLIANT SINGLE DOOR

FURNITURE PLAN NOTES:

- GENERAL USE MEETING ROOM #1 ON 12TH FLOOR TO INSTALL MODULAR PARTITION 18" FROM CEILING.
- GENERAL USE MEETING ROOM #2 ON 12TH FLOOR TO INSTALL MODULAR PARTITION 18" FROM CEILING.
- MODULAR PARTITION ON 13TH FLOOR WELCOME AREA TO BE INSTALLED 18" FROM CEILING. WORKSTATIONS, SHELVES, LATERAL FILE CABINETS, AND OTHER SYSTEMS FURNITURE ALONG WINDOWS SHALL BE CONFIGURED TO ENSURE WINDOW OPENINGS REMAIN COMPLETELY UNOBSTRUCTED.
- ADJACENT TO WINDOWS, UTILIZE LOW PARTITIONS OR A PERIMETER PARTITION ALONG WINDOW EDGE.
- WORKSTATIONS WILL FEATURE HIGHLY ADJUSTABLE ERGONOMIC TASK CHAIRS, WHILE MEETING AREAS WILL USE CONFERENCE CHAIRS WITH BASIC PNEUMATIC HEIGHT ADJUSTMENTS.
- LATERAL FILE CABINETS TO BE LOCATED ON THE 13TH FLOOR SHALL INCLUDE A TOTAL OF FIVE (5) DRAWERS WITH FIVE (5) FULLY RETRACTABLE SHELVES.
- A TWO (2) DRAWER PEDESTAL FILING CABINET IS TO BE INCLUDED AT EVERY WORKSTATION ON BOTH 12TH AND 13TH FLOOR. A TWO (2) DRAWER LATERAL FILING CABINET
- A TWO (2) DRAWER LATERAL FILING CABINET IS TO BE INCLUDED AT EVERY WORKSTATION ON BOTH THE 12TH AND 13TH FLOOR.
- ADJUSTABLE HEIGHT EXEC DESK WITH SIDE TABLE/CRENZIA.
- EXISTING FLOORING TO REMAIN. DO NOT DAMAGE



OMIZU architecture inc.
615 Piikoi Street Ste 501
Honolulu Hawaii 96814
Tel 808.721-4267
www.omizuarch.com

This work was prepared by me or under my supervision and construction of the project will be under my observation. Expiration date 04/30/24.

REVISIONS:

REV	DATE	DESCRIPTION

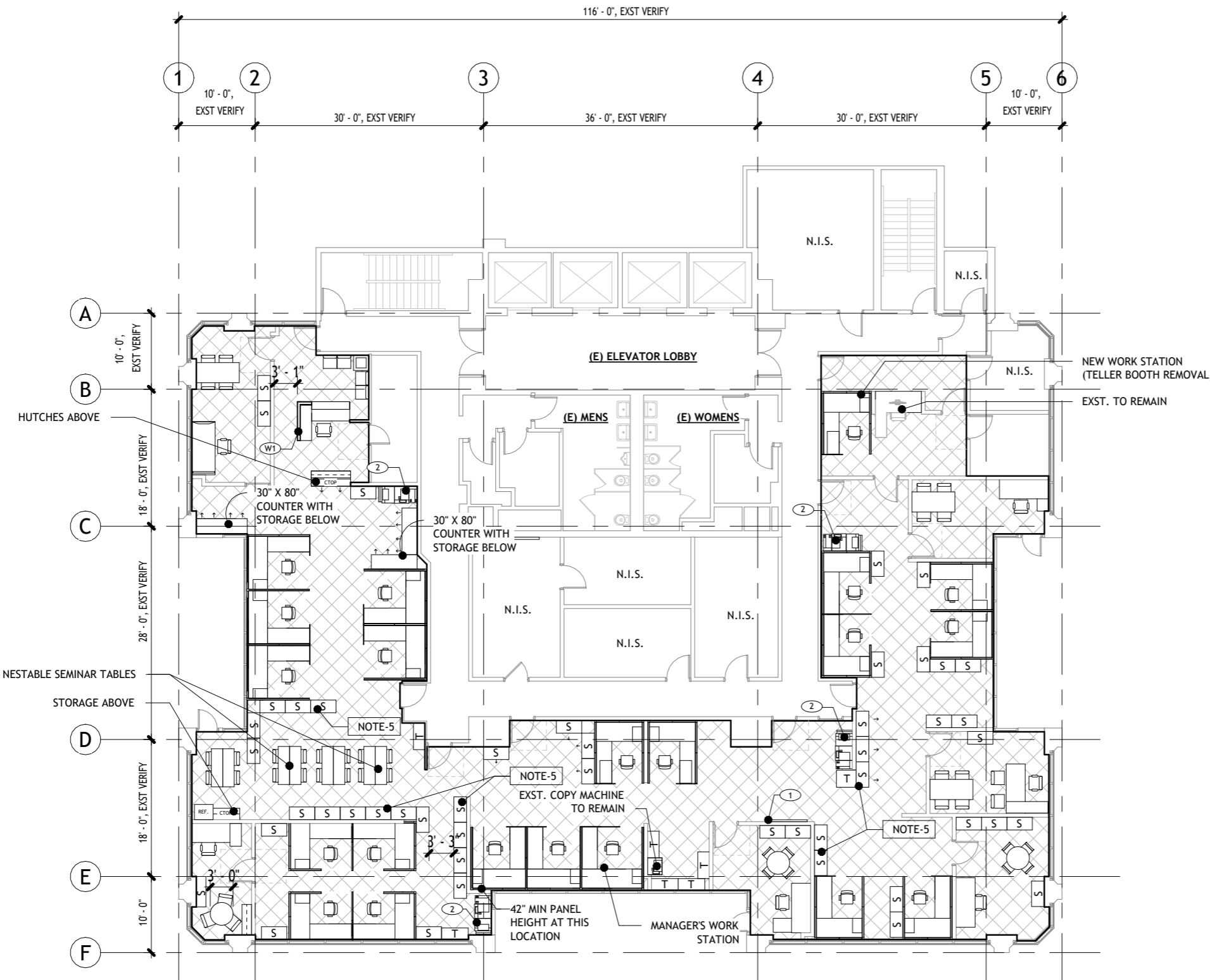
SHEET TITLE

12TH FLOOR
FURNITURE PLAN

DRAWING NO.

A101

DATE: 5/6/2026 PROJECT NO.: 251202



FURNITURE PLAN KEY NOTES:

- 1 60" FLAT PANEL MONITOR W/ MONITOR MOUNT
- 2 (E) PRINTING STATION (TO REMAIN)
- W1 PARTITION - 18" FROM CEILING W/ ADA COMPLIANT SINGLE DOOR

FURNITURE PLAN NOTES:

1. MODULAR PARTITION ON 13TH FLOOR WELCOME AREA TO BE INSTALLED 18" FROM CEILING.
2. WORKSTATIONS, SHELVES, LATERAL FILE CABINETS, AND OTHER SYSTEMS FURNITURE ALONG WINDOWS SHALL BE CONFIGURED TO ENSURE WINDOW OPENINGS REMAIN COMPLETELY UNOBSTRUCTED.
3. ADJACENT TO WINDOWS, UTILIZE LOW PARTITIONS OR A PERIMETER PARTITION ALONG WINDOW EDGE.
4. WORKSTATIONS WILL FEATURE HIGHLY ADJUSTABLE ERGONOMIC TASK CHAIRS, WHILE MEETING AREAS WILL USE CONFERENCE CHAIRS WITH BASIC PNEUMATIC HEIGHT ADJUSTMENTS.
5. LATERAL FILE CABINETS TO BE LOCATED ON THE 13TH FLOOR SHALL INCLUDE A TOTAL OF FIVE (5) DRAWERS WITH FIVE (5) FULLY RETRACTABLE SHELVES.
6. A TWO (2) DRAWER PEDESTAL FILING CABINET IS TO BE INCLUDED AT EVERY WORKSTATION ON BOTH 12TH AND 13TH FLOOR. A TWO (2) DRAWER LATERAL FILING CABINET
7. A TWO (2) DRAWER LATERAL FILING CABINET IS TO BE INCLUDED AT EVERY WORKSTATION ON BOTH THE 12TH AND 13TH FLOOR.
8. ADJUSTABLE HEIGHT EXEC DESK WITH SIDE TABLE/CRENZA.
9. CARPET
PRIOR TO SYSTEM FURNITURE INSTALLATION, PROVIDE 12" x 36" MODULAR CARPET TILE PLANK AND 4" RUBBER WALL BASE. PROVIDE PER STATE COORDINATED/RECOMMENDED PATTERN AND COLOR WITH MANUFACTURER RECOMMENDED ADHESIVE. (SEE ALSO WRITTEN SPECIFICATION.)



This work was prepared by me or under my supervision and construction of the project will be under my observation. Expiration date 04/30/24.

REVISIONS:

REV	DATE	DESCRIPTION

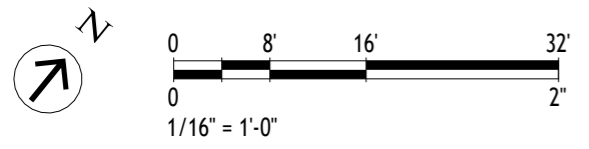
SHEET TITLE

13TH FLOOR FURNITURE PLAN

DRAWING NO.

A102

DATE: 5/6/2026 PROJECT NO.: 251202



3 13TH FLOOR
1/16" = 1'-0"

NOTE:

1. BIDDERS/CONTRACTORS ARE RESPONSIBLE FOR VERIFYING ALL DIMENSIONS, ADA ACCESSIBLE REQUIREMENTS, DELIVERY CLEARANCES TO ALL INTERIOR SPACES AND SHALL COMPLY WITH ALL BUILDING CODE.
2. BIDDERS/CONTRACTORS ARE RESPONSIBLE FOR ALL ELECTRICAL CONNECTIONS, POWER POLES REQUIRED, ADDITIONS TO ELECTRICAL PANELS, CONDUIT, WIRING, PER CURRENT ELECTRICAL CODE. LICENSED ELECTRICAL CONSULTANTS/ELECTRICIAN RECOMMENDED FOR ALL POWERED WORK STATIONS.

Style	SEEDLING (Modular)
Construction	Textured Patterned Loop
Face Fiber	Type 6
Dye Method	Solution / Yarn
Gauge	1/10 (39.37)
Stitches Per Inch	11 (43.31)
Density	7540 (280.17)
Pile Thickness	0.092 (2.34)
Weight	19 (644)
Backing Type	Infinity 2 rEvolve II
Size	12" x 36"
Colors	18
Packaging	5.330
Adhesive	Infinity 2 Adhesive Frellock Tabs (Infinity 2 and Infinity 2 MG Only) XpressStep for LVT & Sheet Vinyl Full Coverage Spray
Installation Method	Vertical Ashlar

Testing

Dimensional Stability (Aachen Test)	Passes
Electrostatic Propensity (AATCC 134)	Less than 3.0 kV
Flooring Radiant Panel (ASTM E648)	Passes- Class 1; ≥ 0.45 watts/cm ²
Smoke Density (ASTM E662)	Passes- ≤ 450
Methenamine Pill Test (ASTM D2859)	Passes
Hexapod (ASTM D5252) TARR	3.0 - Heavy

Environmental Data

NSF/ANSI 140 Certification	Infinity 2 Modular - Gold / rEvolve® II Modular -Gold
Recycled Content	Contains recycled content
Indoor Air Quality	CRI Green Label Plus Certified
Product Declarations	Declare Red List Free - rEvolve II Third Party Verified HPD Third Party Verified EPD
Carbon Offset	105% Cradle to Gate (A1-A3), visit website for more information
LEED	May contribute to LEED credits: Building Product Disclosure & Optimization - EPDs Building Product Disclosure & Optimization Building Product Disclosure & Optimization - EPDs Building Product Disclosure & Optimization - Sourcing Raw Materials Building Product Disclosure & Optimization - Material Ingredients; IEQc2 - Low Emitting Materials
Manufacturing	Calhoun, GA (USA) - ISO 14001

Warranty

Warranty	Limited Lifetime Wear & Backing Warranty Limited 15-Year XGUARD® Stain Resistant Warranty Limited 15-Year ColorSafe® Bleach Resistant Warranty
----------	--

- Specifications are based on averages from normal manufacturing tolerances. Such variations do not affect product performance.
- Protective chair pads are recommended under office chairs with roller casters to preserve appearance and avoid premature wear.
- As with all quality carpets, slight variation in color may occur from dye lot to dye lot.
- Backing or other materials may be changed without prior notice when shortages occur or when technological advancements provide improved product performance.
- This product is intended solely for use as an indoor floor covering and is not recommended or sold for any other purpose.
- The inherent characteristics of geometric linear patterns can result in double-dark or double-light lines at the seam and to some extent pattern run-off or bias. This is not a manufacturing defect, and as such, should be considered when selecting a modular carpet installation method.
- Cut piles, cut and loops and tip-sheared constructions are not recommended for heavy commercial traffic, corridors or through channeled traffic. Please contact your Mannington Commercial representative for information regarding these constructions and your specific end use application.
- Please make your final selection from an actual swatch. To order samples, go to manningtoncommercial.com or call 800.241.2262 ext. 6913.